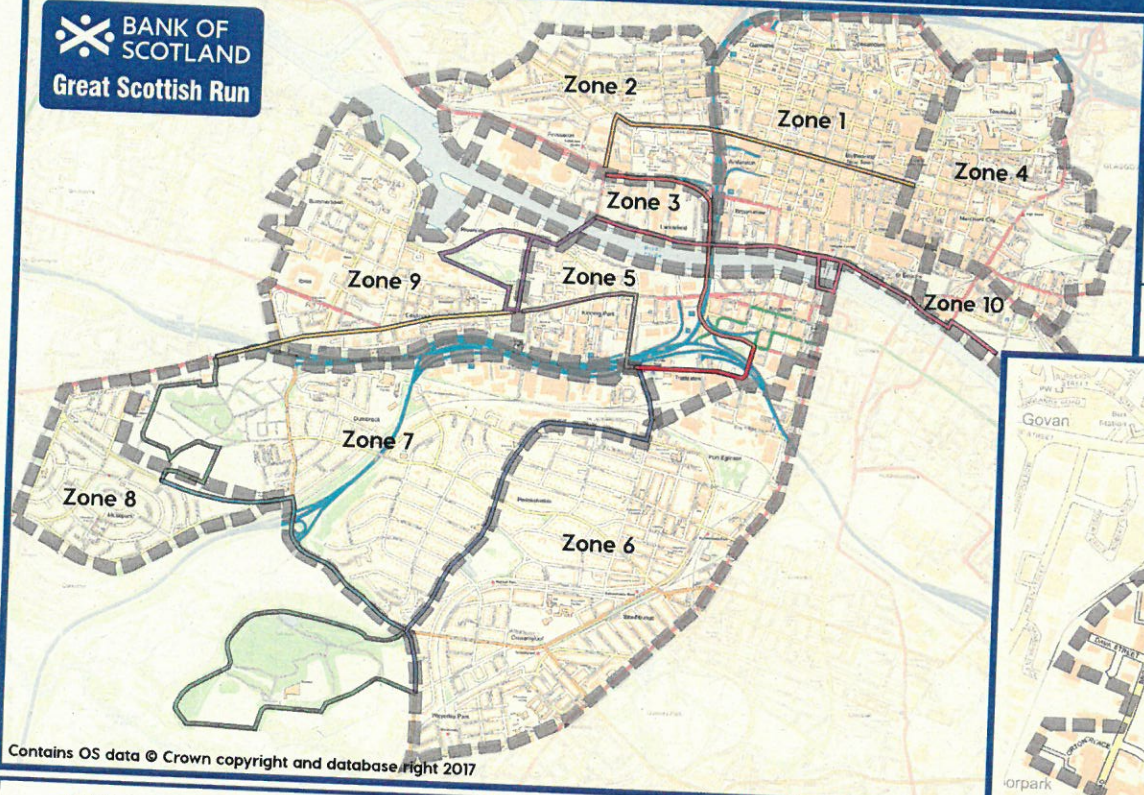
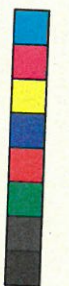


TRAVEL INFORMATION FOR YOUR AREA



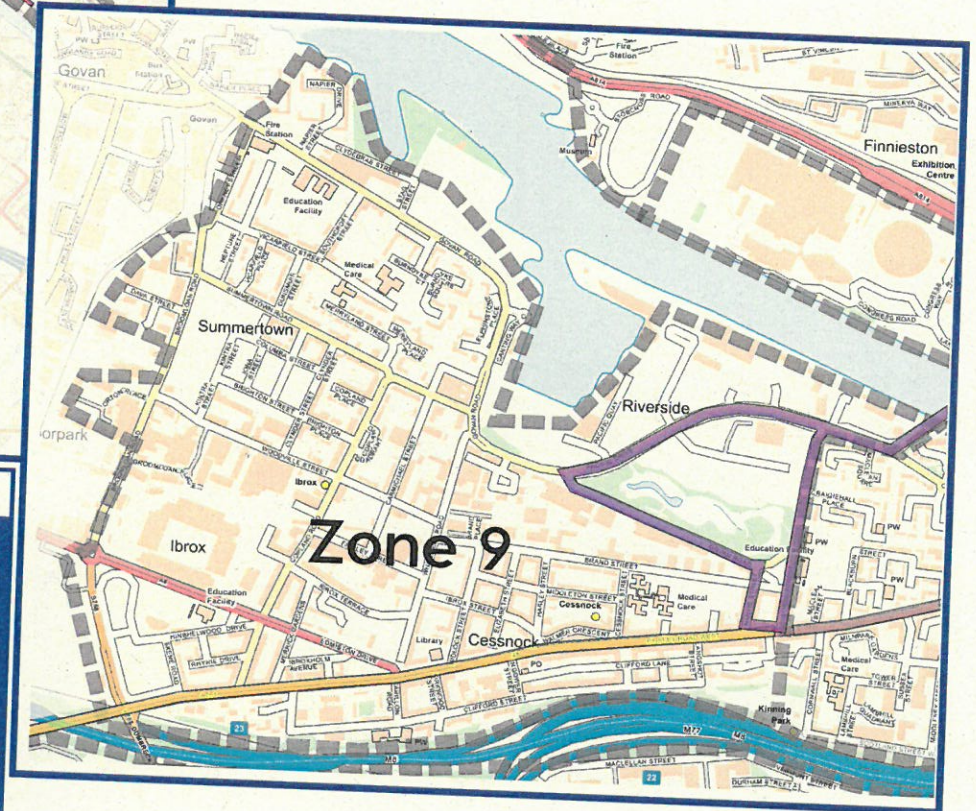
COLOUR	TARGET REOPENING TIME	
(Grey)	10K SECTION FROM SCOTLAND ST TO GOVAN RD	11:45hrs
(Orange)	START LINE TO CLYDESIDE EXPRESSWAY OFF-RAMP	12:45hrs
(Red)	CLYDESIDE EXPRESSWAY OFF-RAMP TO SHIELDS RD	13:30hrs
(Blue)	SHIELDS RD TO POLLOK PARK ENTRANCE	14:00hrs
(Light Blue)	POLLOK PARK EXIT TO BELLAHOUSTON PARK ENTRANCE	15:00hrs
(Yellow)	BELLAHOUSTON PARK EXIT TO HARVIE ST	15:15hrs
(Purple)	HARVIE ST TO LANCEFIELD QUAY	15:45hrs
(Pink)	LANCEFIELD QUAY TO SALTMARKET	16:30hrs



Contains OS data © Crown copyright and database right 2017

ZONE 9 - THE FOLLOWING INFORMATION WILL DIRECTLY AFFECT YOUR AREA:

- Paisley Road West (between Helen St and Seaward St) will be closed between 0630 and 1515. Traffic will be able to travel eastbound from Helen St to Broomloan Road
- Between 0630 and 1130, event stewards will allow residents on the south side of Paisley Road West to cross and access the wider road network at the nearest point.
- Northbound traffic will be permitted to use the Fastlink lane to cross the Clyde Arc for the duration of the event. At the north end of the Clyde Arc all traffic will be turned left onto Finnieston Quay. The Clyde Arc will be reopened to southbound traffic at 1630.
- Lorne St, Harvie St and Govan Road (east of Festival Park) will be closed between 0630 and 1545.
- To egress this area during the run closures please park your vehicle on or just off Brand St to the west of Harvie St. This will allow egress via Brand St and Whitefield Road.
- No parking will be permitted anywhere on closed roads for the duration of the closures. Please note that any vehicles parked within the restricted areas will be removed by Glasgow City Council Parking Services contractors.
- Warning signage and 'No Parking' cones will help define these areas.





LOCAL RESIDENT INFORMATION

SATURDAY 30 SEPTEMBER & SUNDAY 1 OCTOBER

Dear Resident/Business Owner

Bank of Scotland Great Scottish Run – Saturday 30th September & Sunday 1st October 2017

The Bank of Scotland Great Scottish Run will take place around Glasgow from Saturday 30th September – Sunday 1st October.

Our Super Saturday takes place on 30th September and has something for the whole family with around 3,000 kids taking part in the Toddler Dash, Family Mile and Junior Run. Saturday's events all start and finish in George Square, taking over the Merchant City and kicks off at 10:00hrs.

The 10k and half-marathon events on Sunday 1st October feature some of the world's greatest athletes, plenty of famous faces and over 30,000 club, charity and fun runners. All of the action from the half-marathon will be broadcast live on BBC2 Scotland from 11:00hrs until 13:45hrs, with the programme also including highlights from the other events held across the weekend. The 10k starts at 09:45hrs with the half-marathon following at 11:30hrs.

Entries for the 10k and Super Saturday events are still open at greatscottishrun.com

You will find details overleaf of the road closures and parking restrictions that will come into effect in the city for the event, and details regarding your area in particular. I would be grateful if you would take note of the information provided and not park within these areas during the times stated. Glasgow City Council's Parking Enforcement Unit will be patrolling these streets and any vehicles parked illegally, and in suspended parking bays, will be removed. Signs and no-parking cones indicating the temporary parking restrictions will be displayed in these locations to assist motorists. Bus services will be diverted due to the road closures. Passengers are advised to check with service providers for route alterations. Emergency service vehicles will not be affected by any of the restrictions. Road closures and diversion routes will be sign-posted with every effort being made to keep traffic flowing as freely and smoothly as possible. For full event road closure details, please visit greatscottishrun.com

For further information on traffic management arrangements, please email info@greatscottishrun.com. Alternatively, if you have any queries, you can call our event hotline on 0141 287 8080. This will be open Monday-Friday (09:00hrs-17:00hrs) from Monday 11th September and then Saturday 30th September and Sunday 1st October (09:00hrs-17:00hrs).

This event is organised by The Great Run Company in association with Glasgow Life and Glasgow City Council and with your co-operation we will make every effort to ensure the event runs smoothly with as little disruption to the local area as possible. Further information can be found by visiting www.greatscottishrun.com and should you wish further clarification on the contents of this letter then please e-mail info@greatscottishrun.com

We hope the information in this letter will prove useful to you in planning your movements around the event. We thank you for your co-operation and hope that you can join us to support the thousands of people taking part to raise money for many fantastic causes.

Yours faithfully,

The Bank of Scotland Great Scottish Run Team

Roads Affected by Closures & Parking Restrictions

Start – George Square	Paisley Road West
St Vincent St	Harvie St (10k)
Finnieston St	Lorne St
Clydeside Expressway	Govan Road
M8 Kingston Bridge	Pacific Drive (fastlink)
West St	Clyde Arc
Scotland St	Lancefield Quay
Seaward St (10k)	Anderston Quay
Paisley Rd (10k)	Broomielaw
Shields Rd	King George Bridge (10k)
St Andrew's Drive	Clyde Place (10k)
Haggs Rd	Glasgow Bridge (10k)
Pollok Park	Clyde St
Dumbreck Rd	Saltmarket
Mosspark Blvd	Finish – Glasgow Green
Bellahouston Park	

